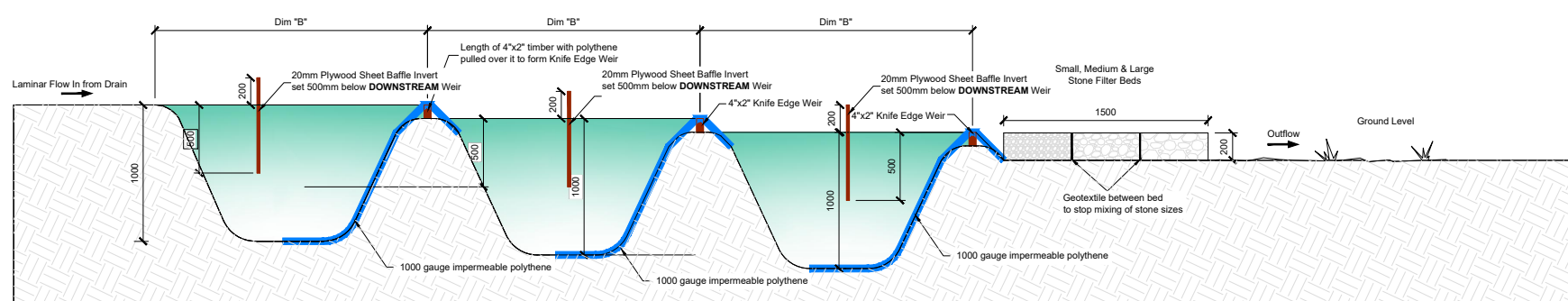


Pond Type			
Pond Type	W(m) Dim A	D(m)	L(m) Dim B
A	3.0	1.0	12.0
B	3.0	1.0	15.0
C	4.0	1.0	12.0
D	4.0	1.0	15.0
E	4.0	1.0	18.0
F	6.0	1.0	12.0
G	6.0	1.0	15.0
H	6.0	1.0	21.0

PLAN VIEW OF SETTLEMENT PONDS (WITH DISCHARGE TO DRAINS WHERE APPLICABLE)

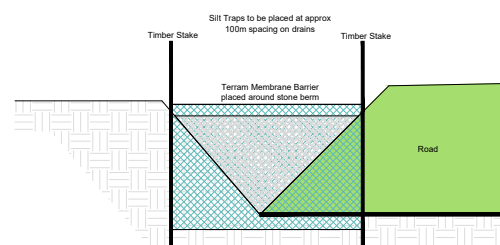
SCALE: 1:50



HY-TEX Terrastop Premium Silt Fence or similar approved. Held in place with 75mmSq by 1.0m height timber posts @ 1.5m c/c

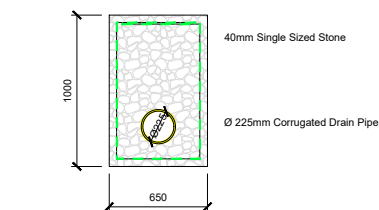
SECTION

SCALE: 1:50



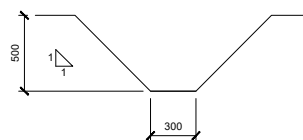
SEDIMENT FENCE DETAIL

SCALE: 1:25



PERMANENT PERIPHERAL LAND DRAIN

SCALE: 1:25



TEMPORARY "V" DITCH DRAIN PROFILE

SCALE: 1:25



COMPLETED SETTLEMENT POND SYSTEM

SCALE: NTS

P01	Planning Application Submission	LB	JL/RM	May, 2023
P00	Issued for Comments	LB	JL/RM	Mar, 2023
rev.	modifications	by	chkd	date

Client  
**EMP Group**

Project  
**Proposed Wind Farm and Grid Connection at Dyrick Hill, County Waterford.**

Stage  
**Planning Application**

Title  
**Drainage Details Sheet 3 of 4**

Scales  
**1:50 (A3)**

Surveyed	Prepared By	Checked	Date
	L.B.	J.L.	Oct, 2022

© COPYRIGHT OF  
**JENNINGS O'DONOVAN & PARTNERS LIMITED,**  
 CONSULTING ENGINEERS,  
 FINSKLIN,  
 SLIGO,  
 IRELAND.  
 TEL. (0035371) 9161416.  
 FAX. (0035371) 9161080.  
 Email. info@jodireland.com  
 Web. www.jodireland.com



Drawing no.  
**6497-PL-303**

Revision  
**P01**